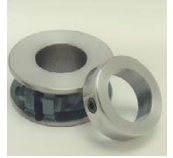




ROYERSFORD MANUFACTURER'S **REPRESENTATIVES LISTING** **(** STOCKING LOCATIONS)**



Bogle International #7
1318 Meadow Ridge
Redding, CT 06896

Bill Bogle

203-912-3390 (Cell)
203-544-7092 (Fax)

TERRITORY – Northern NJ (North of 195)

Brandon Company ** #42
790 West 1760 South, #4
Salt Lake City, UT 84104

Dennis Larson

801-487-2231(Office)
801-969-0644 (Night)
801-485-1521 (Fax)

Richard (Todd) Errett

TERRITORY - AZ, CO, ID (East of Rt 93), NM, NV, UT, WY

Canner Associates, Inc. #5
253D Worcester Rd
Charlton, MA 01507

Joel Casaubon

508-347-5117 (Office)
508-347-2612 (Fax)
508-414-2345 (Cell)
860-675-0073 (Office)
860-675-0074 (Fax)
860-305-1898 (Cell)
603-369-9196 (Cell)

Rob Nelson

Mark Eisenhauer

TERRITORY - CT, ME, MA, NH, NY, RI, VT

Driven Sales #10
3 W Virginia Ave
West Chester, PA 19380

Scott Olmsted

610-363-6884 (Office)
610-672-9300 (Fax)
484-802-9115 (Cell)
484-802-9114 (Cell)

Jean Olmsted

TERRITORY - DE, MD, Southern NJ (South of I-95), PA (East of 219), VA (North of I-64)

Joint Way Internationl Inc ** #55
Warehousing Facility
2500 East 5th Street
Vancouver, WA 98661

Scott Toms

Ethan Inman

Todd Nissen

888-566-7781 (Office)
360-693-1709 (Office)
360-693-5680 (Fax)

**** See Mooney Pacific Northwest Division for Sales Representative**

TERRITORY - WA, OR, ID (West of Rt 93), British Columbia

Revised 4/30/2019

REPRESENTATIVE LISTING - CONTINUED

LMI (Landgraf-McAbee, Inc.) #15

Main Office

3556B Centre Circle
Fort Mill, SC 29715

Doug Landgraf
Steve McAbee
Devin Herberg

803-396-8200
803-396-8208 (Fax)
704-502-4898 (Cell)
864-787-5030 (Cell)
804-938-7107 (Cell)

TERRITORY - VA

Mooney Industrial Inc. ** #47

OFFICE- 16162 Beach Blvd., Suite 260
Huntington Beach, CA 92647

Pat Parmelee
John Mendenhall
Walt Penrose
John Magyar
Herb Mooney
Paul Mooney
Kelin Mooney
Ron Neitzke

714-841-7902 (Office)
714-841-0821 (Fax)

WAREHOUSE- 3345 Industrial Drive, #17
Santa Rosa, CA 94503

707-541-3660 (Office)
707-570-0804(Fax)

TERRITORY - CA,HI

Mooney Pacific Northwest Division ** #52

Jon Van Natta

360-887-4108

TERRITORY - WA,OR,ID (West of Route 93), British Columbia

Poklar Power Motion, Inc. ** #8

28861 Euclid Avenue
Cleveland, OH 44092

Thomas Daddario
Bob Simons
Mark Gehring
Mike Clark
Aaron Fischer
Colleen Daddario
Tom Olschlage
Heather Nobbe

440-585-2121 (Office)
440-585-2122 (Fax)

Cincinnati Office

19868 Reed Hartman Hwy Suite 111
Cincinnati OH 45242

TERRITORY – IN, OH, Lower Eastern MI, Western PA, WV

Premier Products, Inc. ** #35

9709 Green Park Industrial Drive
Saint Louis, MO 63124

Pat Anvender
Ken Anvender

John Marshall
Steve Anvender
Debbie Janik
John P. Anvender

314-714-1460 (Office)
877-884-8342 (Office)
314-714-1461 (Fax)

TERRITORY – MO, KS, SOUTHERN IL (South of Rt 136)

Ri-Co Sales Company ** #20

2406 B Felts Avenue
Nashville, TN 37211

Roy Richardson
Carol Richardson
Susan Minatra
Danny Richardson

615-255-5110 (Office)
615-646-+1397 (Night)
615-242-7945 (Fax)
800-476-3231 (Office)

TERRITORY - AL, GA, FL, KY, MS,NC, SC, TN

REPRESENTATIVE LISTING -CONTINUED

E E Rempfer & Associates, Inc ** #38
9201 Penn Avenue S, Suite #31, Dock #19
Bloomington, MN 55431

John Marshalla
Courtney Marshalla
John Gentile
Chad Medrow
Marty Kaye
Randy Nelson
Troy Thompson
Robert Sheppard
Michael Miller
Amy Romano
Robert DeCoursey

952-935-8271 (Office)
952-935-8399 (Fax)
sales@remperinc.com

Rempfer-RPM
1205 W National Avenue
Addison, IL 60101

630-458-9511 (Office)

TERRITORY - MN, IA, ND, SD, NE, WI, MI (Upper Peninsula), NORTHERN IL, (North of Route 136)
IN (Lake, Porter & LaPorte Counties)

Robco, Inc. ** #36
1523 Crescent
Carrollton, TX 75006

Joey Moor
Kevin Springstead
Donnie Heckler
Gary Robinson
Mike Matte
Dwain Phillips
Patricia Heller
Kathleen Ponder
Diane Crow
Sam Richards
Larry Peevy

972-242-3300
972-245-2328 (Fax)

TERRITORY - AR, LA, OK, TX

Canada

Power-Motion Components ** #95
40 Engelhard Drive, Unit 6
Aurora, ON L4G 6X6

Mike Cotton
Gord Holbrook
Michelle Gilroy

905-713-9952 (Office)
905-713-9962 (Fax)
416-587-9962 (Cell)

TERRITORY – CANADA (Exception- British Columbia)



**A Team of Professionals
Offering Quality Products and
Customer Service**



REVISED 4/30/2019