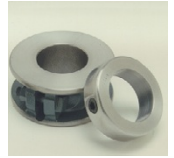




# **ROYERSFORD MANUFACTURER'S** **REPRESENTATIVES LISTING** **(\*\* STOCKING LOCATIONS\*)**



---

---

**Bogle International #7**  
137 Hollow Tree Ridge #913  
Darien, CT 06820

Bill Bogle

203-656-0766 (Office)  
203-656-0767 (Fax)  
203-912-3390 (Cell)

**TERRITORY** – Northern NJ (North of 195)

---

---

**Brandon Company \*\* #42**  
790 West 1760 South, #4  
Salt Lake City, UT 84104

Dennis Larson

801-487-2231(Office)  
801-969-0644 (Night)  
801-485-1521 (Fax)

Richard (Todd) Errett

**TERRITORY** - AZ, CO, ID (East of Rt 93), NM, NV, UT, WY

---

---

**Canner Associates, Inc. #5**  
253D Worcester Rd  
Charlton, MA 01507

Joel Casaubon

508-347-5117 (Office)  
508-347-2612 (Fax)  
508-414-2345 (Cell)

Rob Nelson

860-675-0073 (Office)  
860-675-0074 (Fax)  
860-305-1898 (Cell)

Jordan Engel

603-856-0270 (Office)  
603-415-0727 (Fax)  
603-369-9196 (Cell)

**TERRITORY** - CT, ME, MA, NH, NY, RI, VT

---

---

**Driven Sales #10**  
3 W Virginia Ave  
West Chester, PA 19380

Scott Olmsted

610-363-6884 (Office)  
610-672-9300 (Fax)  
484-802-9115 (Cell)

Jean Olmsted

484-802-9114 (Cell)

**TERRITORY** - DE, MD, Southern NJ (South of I-95), PA (East of 219), VA (North of I-64)

---

---

**G/S Associates \*\* #50**  
6077 SW Lakeview Blvd, Ste C  
Lake Oswego, OR 97035

Merlyn Wright  
Steve Wright

503-227-6638 (Office)  
503-697-8747 (Night)  
503-227-5413 (Fax)

SHIPPING:

Brian Koppang

6077 SW Lakeview Blvd, Dock #8  
Lake Oswego, OR 97035

**TERRITORY** - AK, HI, OR, WA, ID (West of Rt 93), MT

**Revised 3/27/2017**

**REPRESENTATIVE LISTING - CONTINUED**

---

---

<b>Industrial Component Sales Inc. #33</b> PO Box 690 Hudson, WI 54016	Mike Mattis  John C. Mackenroth  Ernie Walters Brian Rauner	612-991-0263 (Cell)  218-759-1065 (Office) 218-759-1080 (Fax) 515-326-2850 (Cell) 402-438-8689 (Cell)
--	--	--

**TERRITORY** - IA, Northern IL (North of Rt 136), MN, MI (Upper Peninsula), ND, NE, SD, WI

---

---

<b>LMI (Landgraf-McAbee, Inc.) #15</b> <b>Main Office</b> 3556B Centre Circle Fort Mill, SC 29715	Doug Landgraf Steve McAbee Devin Herberg	803-396-8200 803-396-8208 (Fax) 704-502-4898 (Cell) 864-787-5030 (Cell) 804-938-7107 (Cell)
--	--	---

**TERRITORY** - VA

---

---

<b>Mooney Industrial Inc. ** #47</b> <u>OFFICE</u> - 16162 Beach Blvd., Suite 260 Huntington Beach, CA 92647	Pat Parmelee John Mendenhall Walt Penrose John Magyar	714-841-7902 (Office) 714-841-0821 (Fax)
<u>WAREHOUSE</u> - 3345 Industrial Drive, #17 Santa Rosa, CA 94503	Herb Mooney Paul Mooney Kelin Mooney Ron Neitzke	707-541-3660 (Office) 707-570-0804 (Fax) 800-647-4644 (Office)

**TERRITORY** - CA

---

---

<b>Poklar Power Motion, Inc. ** #8</b> 28861 Euclid Avenue Cleveland, OH 44092	Thomas Daddario	440-585-2121 (Office) 440-585-2122 (Fax)
<b>Cincinnati Office</b> 19868 Reed Hartman Hwy Suite 111 Cincinnati OH 45242	Rick Christyson Bob Simons Don Slicker Mike Clark Mark Gehring Aaron Fischer Colleen Daddario Tom Olschlager Heather Nobbe	

**TERRITORY** - IN, OH, Lower Eastern MI, Western PA, WV

---

---

<b>Premier Products, Inc. ** #35</b> 9709 Green Park Industrial Drive Saint Louis, MO 63124	Pat Anvender Ken Anvender  John Marshall Steve Anvender Debbie Janik John P. Anvender	314-714-1460 (Office) 877-884-8342 (Office) 314-714-1461 (Fax)
---	---	--

**TERRITORY** - MO, KS, SOUTHERN IL (South of Rt 136)

---

---

**Revised 3/27/2017**

**REPRESENTATIVE LISTING -CONTINUED**

**Ri-Co Sales Company \*\* #20**  
2406 B Felts Avenue  
Nashville, TN 37211

Roy Richardson 615-255-5110 (Office)  
615-646-1397 (Night)  
615-242-7945 (Fax)  
800-476-3231 (Office)

Carol Richardson  
Susan Minatra  
Dan Richardson

**TERRITORY** - AL, GA, FL, KY, MS, NC, SC, TN

**Robco, Inc. \*\* #36**  
1523 Crescent  
245-2328 (Fax) Carrollton, TX 75006

Joey Moor 972-242-3300  
Kevin Springstead 972-  
Donnie Heckler  
Tim Hickle  
Gary Robinson  
Pat Altenbauner  
Dwain Phillips  
Patricia Heller  
Kathleen Ponder  
Dee Dee Ewing  
Diane Crow  
Sam Richards  
Larry Peevy

**TERRITORY** - AR, LA, OK, TX

**Canada**

**Power-Motion Components \*\* #95**  
40 Engelhard Drive, Unit 6  
Aurora, ON L4G 6X6

Mike Cotton 905-713-9952 (Office)  
905-713-9962 (Fax)  
416-587-9962 (Cell)  
  
Gord Holbrook  
Michelle Gilroy

**TERRITORY** - CANADA



**A Team of Professionals  
Offering Quality Products and  
Customer Service**



**REVISED 3/27/2017**